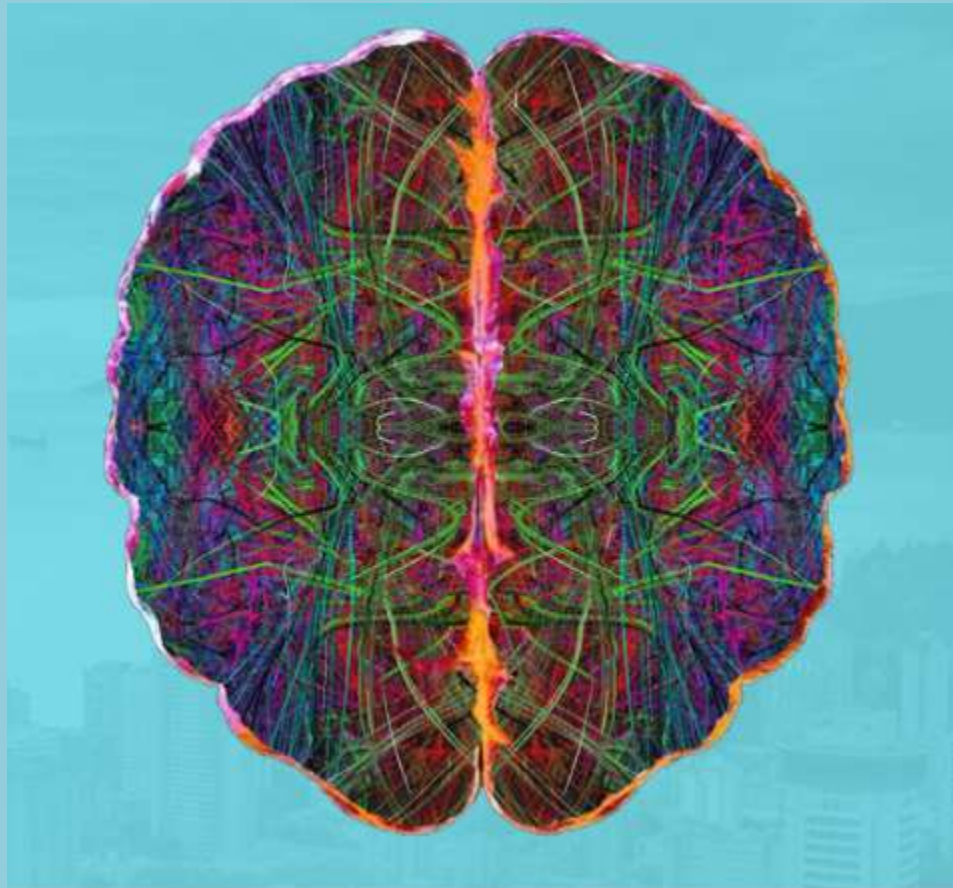


Vancouver 2019

Annual Conference | Congrès annuel

APRIL 12 - 13 - 14 AVRIL



Conference at a glance | Programme en bref

EMDR Therapy: Making Connections.

Thérapie EMDR: Établir des liens.

Pinnacle Hotel Harbourfront | Vancouver, BC

Conference at a glance | Congrès en bref

Thursday April 11th • Jeudi 11 avril				
5:00–7:00		Registration / Inscription		PORT OF SAN FRANCISCO
Friday April 12th (Education Day) • Vendredi 12 avril (Journée de Formation)				
8:00–8:45		Registration / Inscription		CORDOVA FOYER
8:45–9:00		Conference Opening and Welcome / Ouverture du congrès et mot de Bienvenue		CORDOVA BALLROOM
9:00–12:00	A	Healing the Traumatized Self: How to manage Complex Clinical Situations in Trauma treatment. / Guérir le Soi traumatisé : Comment gérer les situations cliniques complexes dans le traitement des traumatismes.	Ruth Lanius MD, PhD	EF
12:00–1:30		Diner libre / Lunch on your own		
1:30–4:30	A	Healing the Traumatized Self: How to manage Complex Clinical Situations in Trauma treatment. / Guérir le Soi traumatisé : Comment gérer les situations cliniques complexes dans le traitement des traumatismes.	Ruth Lanius MD, PhD	EF
5:00–6:30	B	85 years of EMDR Therapy experience – What we've learned. / 85 années de thérapie EMDR : Ce que nous avons appris.	Marshall Wilensky PhD, Katie O'Shea MSW, LCPC & Arnold Popky PhD, MFF	EF
Saturday April 13th • Samedi 13 avril				
8:00–9:00		Inscription / Registration		CORDOVA FOYER
9:00–12:00	A	Advancing excellence in treating Complex Trauma.	Kathleen Martin MSW, LCSW & Cindy Shrigley MSW, RSW	E
	B	Extended resourcing. / Enrichissement des ressources.	Roy Kiessling MSW, LISW	EF
	C	Integrated treatment of Chronic Pain and Chronic Health Conditions: Utilizing Advanced EMDR approaches and Nervous System-Driven skills.	Gary Brothers MSW, LCSW	E
	D	Current status of EMDR Therapy.	Louise Maxfield PhD	E
9:00–10:30	E	The other side of heroes: First Responders and Chronic Pain.	Michelle Gottlieb PsyD, MFT, LPCC & Deborah Silveria PhD, LMFT	E
	F	EMDR with Overactive Immune Systems: MCS and GvH.	Robin Shapiro MSW, LICSW	E
10:45–12:15	G	Benefits and mitigated risks of the intensive format for EMDR: Taking care ethically.	Sandra Paulsen PhD	E
	H	Using EMDR Therapy with individuals who are suicidal and in an acute mental health crisis.	Simon Proudlock C Psychol, AFBPsS	E
12:00–1:30		Lunch on your own / Diner Libre		

Conference at a glance | Congrès en bref

SATURDAY CONT. / SAMEDI (SUITE)

1:30–4:30	A	LENS, EMDR and Neural Regulation: Brain and Body.	Ulrich Lanius PhD	E
	B	EMDR with Ego State interventions.	Robin Shapiro MSW, LICSW	E
	C	Beyond trauma: Transpersonal Resourcing in EMDR for client transformation.	Irene Siegel PhD, LCSW	E
	D	Next generation EMDR Addiction Treatment based on the EMDR Consulting Model.	Terence Wade PhD & Darlene Wade LCSW	E
	E	Ego-State Therapy Interventions to prepare Dysregulated Dissociative Clients for EMDR. / Thérapie de l'État du Moi : Intervention pour préparer les clients dissociatifs dysrégulés au EMDR.	Shirley Jean Schmidt MA, LPC	EF
1:30–3:00	F	Incorporating NeurOptimal Neurofeedback® into your therapy practice to enhance EMDR processing.	Jan Yordy MEd	E
3:15–4:45	G	Augmenting the FSAP and DeTur with Ego State Hypnosis, Age Regression and Progression.	Scott Smith MA, PLLC	E

5:00–6:15 Annual General Meeting / Assemblée générale annuelle (Traduction Anglais au Français disponible) **CORDOVA BALLROOM**6:30–8:00 Reception / Réception **TUSCANY ROOM**

Sunday April 14th • Dimanche 14 avril

8:00–9:00 Registration / Inscription **CORDOVA FOYER**

9:00–12:00	A	"Getting past your past" into the present: ISP® & ERP – Immediate stabilization in natural and man-made disasters and trauma. / "Getting past your past" dans le présent: ISP® & ERP – Stabilisation immédiate lors de traumatismes, de catastrophes naturelles ou causées par l'homme.	Gary Quinn MD	EF
	B	Children who are groomed...delivering effective EMDR when the client does not present with a typical trauma.	Susan Darker-Smith LLM, MSc	E
	C	Sleep: The unrecognized key to stabilization.	Jaan Reitav PhD & Celeste Thirwell MD, FRCPC	E
9:00–10:30	D	A self-evaluative tool to assess and repair clinical challenges in Complex Trauma Cases.	Kathleen Martin MSW, LCSW & Cindy Shrigley MSW, RSW	E
	E	From conflict to integration: Addressing cultural and social identities within treatment formulation.	Raquel Hoersting PhD	E
10:45–12:15	F	How to apply IMSW Intensive EMDR for Military and First Responders who have been diagnosed with PTSD.	Crystal Arber MSW	E
	G	Using EMDR Therapy with Disordered Eating, Attachment, and Complex Trauma.	Lori Kucharski MA, LMFT	E

12:00–1:30 Networking Lunch / Dîner de réseautage **CORDOVA BALLROOM**

suite / cont. →

Conference at a glance | Congrès en bref

SUNDAY CONT. / DIMANCHE (SUITE)

1:30–4:30	A	Le traitement des cauchemars à l'aide de l'EMDR.	Guy Boucher MA	F
	B	The creative use of metaphor to enhance the effectiveness of EMDR Therapy in working with Complex Trauma.	Davy Hutton MSC. BACP & Des McEnemy MSc, MA, BACP	E
	C	Eating Disorders and EMDR Therapy; Utilizing Art Techniques.	Marie Rothman MSc, LPC	E
	D	Innovative applications for EMDR: Music Faculties, a Social Media Platform, Horse Ranches – What next?	Jim Lichti MSW, RSW & Caroline Leblanc MA & Nancy Molitz, B.Mus., M.A., RP, RMFT	E
1:30-3:00	E	Deepening EMDR effects with Adjunctive Low-Level Light Therapy (LLLT).	Ulrich Lanius PhD	E
3:15-4:45	F	Virtual EMDR: An idiographic case analysis.	Robert Gregoire MCP, RCC & Valentina Chichinova MA	E

E = ENGLISH PRESENTATION / PRÉSENTÉ EN ANGLAIS

F = PRÉSENTÉ EN FRANÇAIS / FRENCH PRESENTATION

EF = PRÉSENTÉ EN ANGLAIS AVEC TRADUCTION SIMULTANÉE EN FRANÇAIS / ENGLISH PRESENTATION WITH FRENCH TRANSLATION

* = CE CREDIT APPROVAL UNDER REVIEW / CRÉDIT UFC SOUS RÉVISION

** = NON-CREDIT SESSION / SESSION SANS CRÉDIT

Poster Presentations / Présentations des affiches (en anglais)

Poster presentations will be available during the breaks on Saturday and Sunday./ Les présentations seront disponibles lors des pauses du samedi et du dimanche.

Continuing Education / Formation Continue

Une demande a été faite à EMDRIA pour l'approbation des unités de formation continue (UFC) EMDRIA. Les crédits EMDRIA sont alloués seulement aux participant(e)s qui ont complété une Formation de base en EMDR approuvée par EMDRIA ou EMDR Europe. EMDR CANADA maintient la responsabilité de ce programme et son contenu respecte les critères et exigences d'EMDRIA.

An application has been made to EMDRIA for approval for EMDRIA CE credits. EMDRIA CE Credits can only be allocated to participants who have completed an EMDRIA or EMDR Europe Approved EMDR Basic Training. EMDR CANADA maintains responsibility for this program and its content is in accordance with EMDRIA requirements.

Special Events | Événements spéciaux

Don't miss the special events during the Conference (there are no additional costs)

Ne manquez pas les événements spéciaux au cours du congrès (aucun coût supplémentaire)

Saturday April 13th / Samedi 13 avril - 5:00pm–6:15pmAnnual General Meeting / Assemblée générale annuelle

Saturday April 13th / Samedi 13 avril - 6:30pm–8:00pmReception / Réception

Sunday April 14th / Dimanche 14 avril - 12:00pm–1:30pm Networking Lunch / Dîner de réseautage

Pricing | Coût

EMDR Canada, EMDRIA, EMDR Europe or other EMDR associations
Membres EMDR Canada, EMDRIA, EMDR Europe ou autres associations EMDR
 The fees include two coffee/tea breaks — Les tarifs incluent deux pauses café/thé

Full Registration (three days) // Pour les 3 journées

Jusqu'au 15 mars 2019 // Early bird until March 15th 2019	\$750
After March 15th 2019 // Après le 15 mars 2019	\$800
Two-Day Registration // Pour deux journées	\$650
Single-Day Registration // Pour une journée	\$350

NON-MEMBERS * // NON-MEMBRES **

Full Registration (three days) // Pour les 3 journées

Jusqu'au 15 mars 2019 // Early bird until March 15th 2019	\$825
Après le 15 mars 2019 // After March 15th 2019	\$875
Two-Day Registration // Pour deux journées	\$700
Single-Day Registration // Pour une journée	\$425

*** Consider joining EMDR Canada at emdrcanada.org.**

First time member fee: \$140 (Regular: \$175). Membership runs from Nov 1st to Oct 31st.

**** Profitez de l'occasion pour devenir membre d'EMDR Canada au emdrcanada.org.**

Membre pour la première fois: 140\$ (Régulier: 175\$). L'adhésion est valide du 1er novembre au 31 octobre.

Conference site is compliant with American Disability Act and Canadian regulations on disability/access. Please contact EMDR Canada if any special accommodations are required. / Les lieux du congrès respectent les normes canadiennes et américaines en matière d'accessibilité. Si vous avez des besoins spéciaux, SVP communiquez avec EMDR Canada.